

JUNIOR SERIES

DMX 225 BLENDER

Ref : MX110



DESCRIPTION

- Lightweight, sturdy and handy.
- Detachable mixer tool for easy cleaning and maintenance.
- Safety button.
- Double insulation.
- Variable speed as standard.
- Stainless steel mixer tube and guard for easy cleaning and perfect hygiene.
- Stainless steel triangular hammer, titanium plated.
- No blade, no risk of cutting.

USE

It allows to mix, directly in the pots, many applications including : fish soups, panades (thick soup reduced to puree), salad dressings, pancakes paste, gravies, sauces, mayonnaise, puree of vegetables lightly pulverized, porridge, raw carrots puree, fruits cream ...

Capacity : 1 to 10 Liters

MAINTENANCE

Clean the outside of the tube and the blade protector by passing it under the faucet.

Wash the motor block with a sponge or with a slightly damp cloth.

Never clean this machine with water jet spray or in the dishwasher.

Use the wall mount to store your device.



TECHNICAL DATA

OUTPUT MAX	270 W
SPEED	3000 to 12000 R.P.M.
VOLTAGE	110 - 120 V or 220 - 240 V
TOTAL LENGTH	505 mm
SHAFT LENGTH	225 mm
DIAMETER	94 mm
ACTUAL WEIGHT	2,9 kg

www.dynamicmixers.com

Dynamic - 518 rue Léo Baekeland BP57 - 85290 Mortagne sur Sèvre

Tél : +33 (0)2 51 63 02 72 • E-mail : contact@dynamicmixers.com

Follow us on social networks !



ACCESSORIES



CAPACITY	5 to 25 Liters
SHAFT LENGTH	225 mm
SPEED R.P.M.	3 000 / 12 000

CAPACITY	1 to 10 Liters
SHAFT LENGTH	225 mm
SPEED R.P.M.	3 000 / 12 000

CAPACITY	1 to 4 Liters
WHISKS LENGTH	185 mm
SPEED R.P.M.	600 / 2 500

CAPACITÉ	1 to 10 kg
SHAFT LENGTH	300 mm
SPEED R.P.M.	70 / 300

CAPACITY	0,8 Liter
HEIGHT	200 mm
SPEED R.P.M.	600 / 2 500



Mixer tool



Blender tool



Extractable whisks

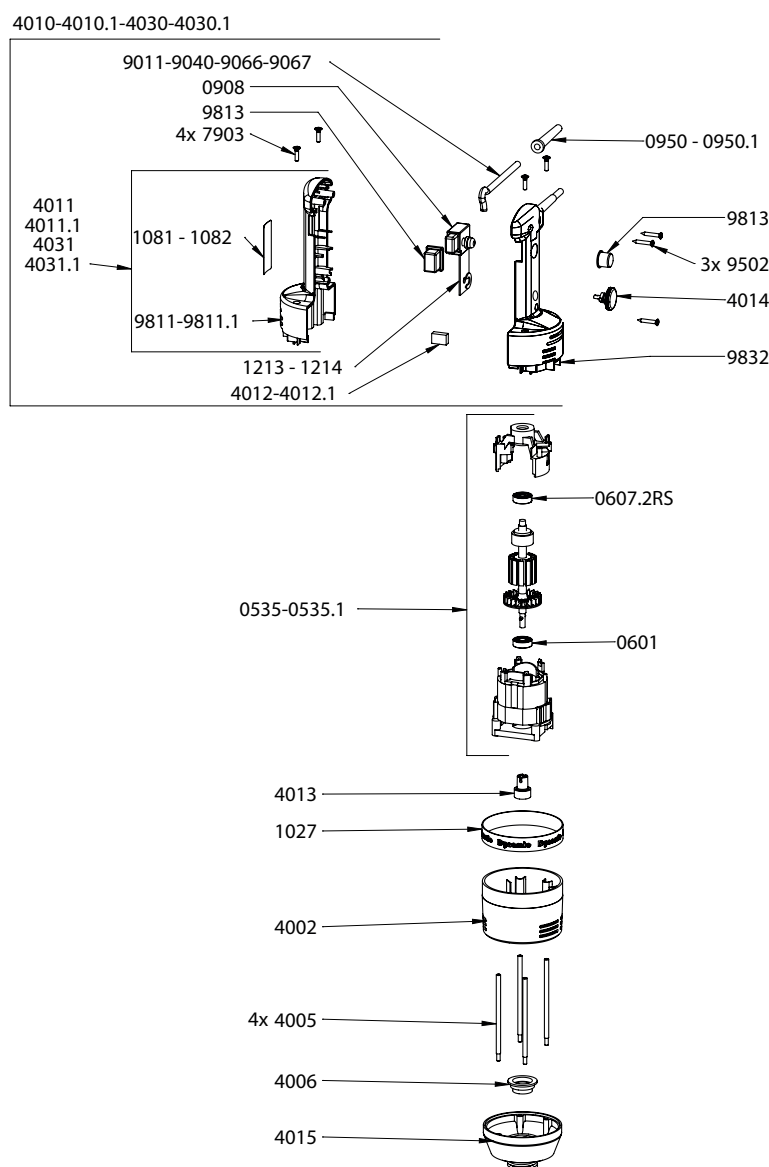


Ricer tool



Cutter bowl





Parts list

Code

Stator 230 V	0535
Stator 115 V	0535.1
Lower ball bearing motor	0601
Upper ball bearing motor	0607.2RS
Wall bracket	0880.1
Non-locking switch	0908
Strain relief 230 V	0950
Strain relief 115 V	0950.1
Dynamic label	1027
Id label (Junior Plus) 230V	1084
Id label (Junior Plus) 115V	1085
Id label (Junior Combi) 230V	1086
Id label (Junior Combi) 115V	1087
Speed variator 230V	1213
Speed variator 115V	1214
Upper motor housing	4002
Braces (4)	4005
Ball bearing ring	4006
Complete handle w/ power cord 230V	4010
Complete handle w/ power cord 115V	4010.1
Lower half handle w/ Junior Plus label 230V	4011
Lower half handle w/ Junior Plus label 115V	4011.1
Filtering capacitor 230 V	4012
Filtering capacitor 115 V	4012.1
Coupling	4013
Speed variator knob	4014
Lower aluminium motor housing	4015
Complete handle w/ power cord 230V	4030
Complete handle w/ power cord 115V	4030.1
Lower half handle w/ Junior Combi label 230V	4031
Lower half handle w/ Junior Combi label 115V	4031.1
Carbon brushes (2) 230 V	4050
Carbon brushes (2) 115 V	4050.1
Brace screws (4)	7903
Power cord 230 V	9011
Power cord 115 V	9040
Power cord (Australia)	9066
Power cord (UK)	9067
Handle screws (3)	9502
Switch protector	9813
Upper half handle Junior Plus & Junior Combi	9832

Blender Junior - Ref AC066
(Complete attachment)

Parts list	Code
Ball bearing	0601
Waterproof seal	0632
Dismounting tool	1435
Foot assembly with bearing	1441
BLENDER DYNAMIX bell	1442
BLENDER DYNAMIX crushing knife	1443
Shaft (coupling, pin, O ring)	1444
Ball bearing ring	4018
Coupling hub	45123

