



RICER TOOL SERIES

PP520

Ref : PP001



EXCLUSIVE PRODUCT



Variable speed



DESCRIPTION

- Complies with the HACCP requirements.
- Powerful and heavy duty.
- Non detachable ricer tool: ensures durability of the machine.
- Stainless steel perforated grid and blade that can be easily dismantled for cleaning.
- Average throughput: 10 kg/min
- Convenient storage.



Detachable stainless steel grid and blade



USE

It allows you to mix a creamy purée with entire potatoes directly in pots, avoiding decanting. Also used for many purées and vegetable creams: carrots, tomato sauce, beet, salad dressings, split peas, cauliflowers.

Apples, peaches, pears, compote preparations, fruit marmalades and redcurrant, strawberry, banana, raspberry, chestnut creams as well as sorbets and puddings can also be made thanks to the PP 520.

Capacity : 20 to 100 Kg



MAINTENANCE

Clean the tube by passing it under the faucet. The grid and blade can be easily dismantled.

Clean them under running water. Wash the motor block with a sponge or with a slightly damp cloth.

Never clean this machine with a water jet spray or in the dishwasher.



TECHNICAL DATA

OUTPUT MAX	650 W
SPEED	500 R.P.M
VOLTAGE	110-120V - 220-240V 50-60Hz
TOTAL LENGTH	870 mm
SHAFT LENGTH	520 mm
GRID DIAMETER	170 mm
ACTUAL WEIGHT	4,9 kg

www.dynamicmixers.com

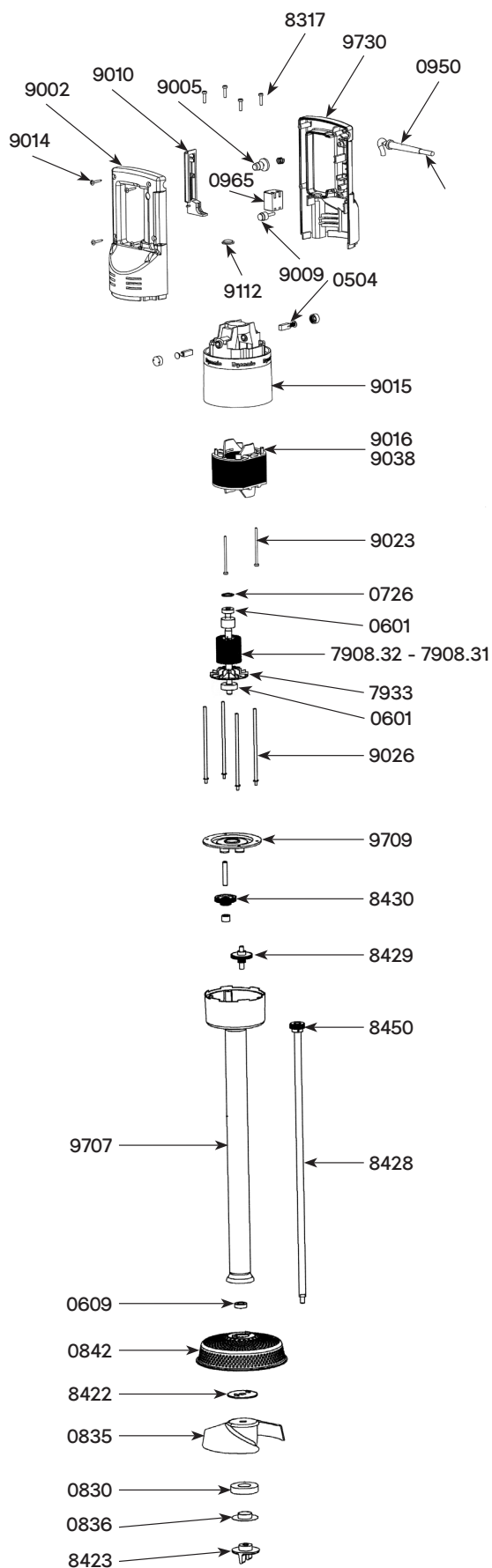
Dynamic - 518 rue Léo Baekeland BP57 - 85290 Mortagne sur Sèvre

Tel : +33 (0)2 51 63 02 72 • E-mail : export@dynamicmixers.com

Follow us on social networks!



TECHNICAL SHEET



Parts list

Code

Carbon brushes	0504
Ball bearing	0601
Waterproof seal	0609
Rubber washer	0726
Pin 3x14	0745
Safety button return spring	0768
Rubber washing	0830
Fan	0835
Friction washer	0836
Self-lubricating ring	0842
Wall bracket	0881
Strain relief 230 V	0950
Strain relief 115 V	0950.1
Switch (230 V / 115 V)	0965
Capacitor	0972
Capacitor + filter	0972.1
Dynamic label	1027
ID label 230 V	1056
ID label 115 V	1057
Rotor 115 V	7908.31
Rotor 230 V	7908.32
Fan	7933
Brace screws (4)	8317
Antifriction seal	8422
Lower bolt	8423
Exit shaft w/ gear	8428
Double gear with washer	8429
Middle gear axle	8430
Shaft gear + pin	8450
Upper half handle	9002
Security cap	9005
Handle cap	9009
Levier de commande	9010
Control lever	9011
Handle screw (4)	9014
Top housing	9015
Stator 230 V	9016
Stator screws 230 V (2)	9023
Braces (4)	9026
Stator 115 V	9038
Power cord 115 V	9040
Carbon brush wires (230 V)	9043
Power cord (Australia)	9066
Power cord (UK)	9067
Knob (115 V)	9112
Carbon brush wires (115 V)	9143
Complete handle 230 V (w/ sticker, screws, logo, switch, strain relief, power cord)	9700
Complete handle 115 V (w/ sticker, screws, logo, switch, strain relief, power cord)	9700.1
Foot assembly	9707
Power cord 230 V	9708
Power cord 115 V	9708.1
Plate w/ 2 seals	9709
Lower handle w/ label 230 V	9730
Lower handle w/ label 115 V	9740